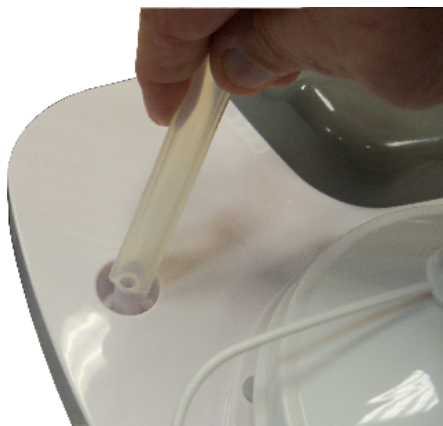


Suction Machine - How to test.

1. Remove the canister hose from the machine.



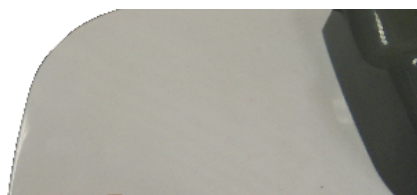
2. Set the vacuum to its highest level.



3. Turn the machine on.



4. Place your finger over the machine's canister connector.





5. The vacuum should read at least the maximum specified vacuum for the unit .



Model	Max Vacuum	Model	Max Vacuum
18600	560 mmHg	7310PR-D	500 mmHg
18605	600 mmHg	7314D-D	550 mmHg
18610	530 mmHg	7314P-D	550 mmHg
18615	530 mmHg	7314P-D-EXF	550 mmHg
7305D-D	550 mmHg	MQ1000	550 mmHg *
7305D-D-EXF	550 mmHg	MQ1100 -EXF	550 mmHg
7305P-D	550 mmHg	MQ1150	580 mmHg
7305P-D-EXF	550 mmHg		* 530mmHg using battery

Home