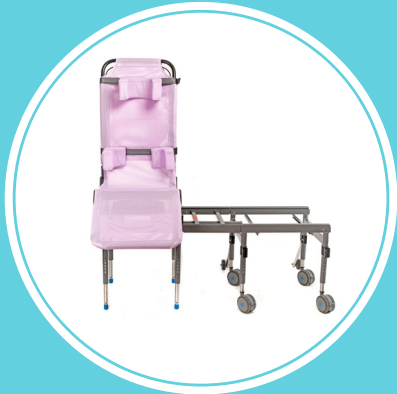


Ultima™ & Ultima Access Bath Transfer System

BATHING



ACCESSORIES



Det. Extension Base



Det. Rolling Base



Attached Rolling Base



Foldable Transfer Base



Compact Transfer Base



Head Support



Lateral Support Pads



Rapid-Dry Pelvic Positioning Belt



Pelvic Positioning Belt

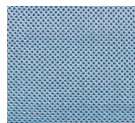


Detachable Armrest

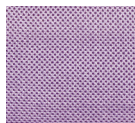


The Ultima™ /Ultima Access Bath Transfer Systems are designed to significantly reduce the effort required by the parent or caregiver to transfer a child or adult into a tub for bathing.

AVAILABLE COLORS



Beach Bubble Blue



Lionfish Lavender



Multi-functional Bath Transfer System for use in home or facility without any bathroom modifications. All systems include anti-tippers.

BENEFITS

Improved patient comfort and safety

FEATURES

- Multiple adjustment angles team to create a comfortable user environment
- Comes standard with ComfortMesh™ seat, tub base, rolling base, two positioning belts and anti-tippers.
- Available in two sizes S/M or L/XL
- Ultima Access has ease of access opening for cleaning and/or toileting
- Many optional comfort and positioning accessories available

Functional and durable

- Tub bases are constructed with high-grade aluminum and stainless steel which provides exceptional strength and durability.
- The Slider Safe™ Auto-Stop Safety System ensures that the chair will not come off the base.
- Bacterial and fungal resistant ComfortMesh™ seat for easier cleaning

Multiple base options

- Two Tub Base Options: Folding or Compact
- Folding Base places two legs in the tub and two outside the tub, and folds for easy storage.
- Compact Base places all four legs inside the tub for use in tighter spaces, and is non-foldable.

Easy to Use

- Three components: a mesh seating system for comfort, a rolling base used for the initial portion of the transfer, and a tub base that when connected to the rolling base engages the shuttle function for transfer.
- Connecting the rolling base to the tub base is easy. Simply line up the interlocking tubes and secure a latch. No tools required.

For more information, call us today!

877-224-0946 | www.inspiredbydrive.com