

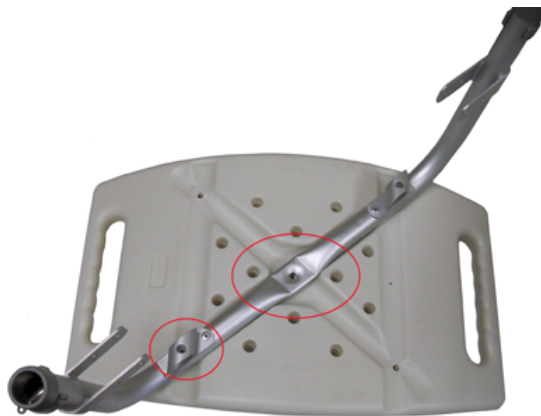
12021KD

Installation & Adjustment

1. Place the seat pad with the bottom facing up.



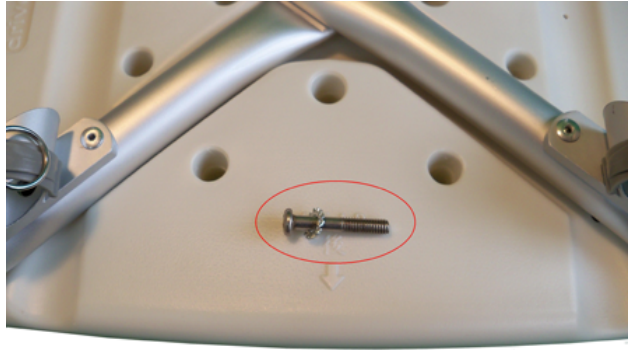
2. Place the seat frame with the indentation facing up into one of the cross channels of the seat. The indentation will be parallel to the cross channel and the receiver for the back post will be in line with the channel that runs from the front to the back of the seat.



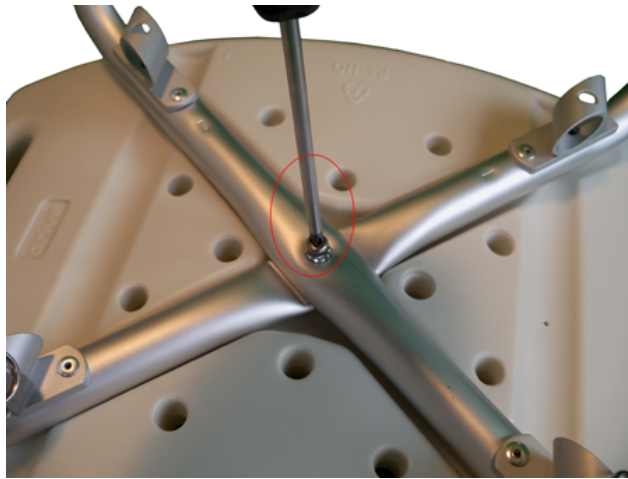
3. Place the other seat frame in the other cross channel of the seat.



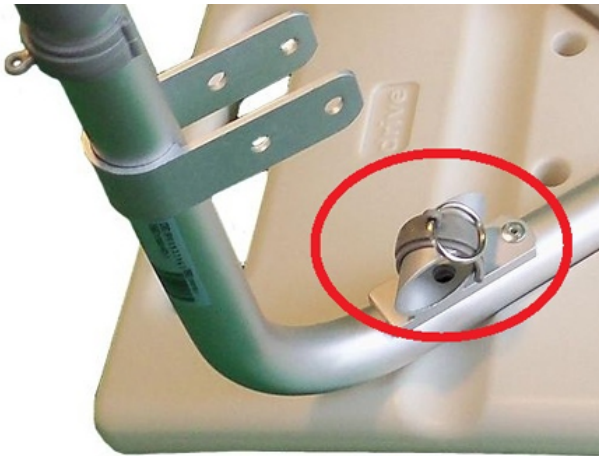
4. Put the star washer on one of the round head bolts.



5. Put the round head bolt with the star washer in the center holes of the seat frame and tighten.



6. Remove all Euro style clips from the back post brackets on the seat frame.



7. Locate the four flat head screws.





8. Insert one of the screws through the top of the back post bracket and through the seat frame.



9. Tighten the screw and repeat for the other three back post brackets.



10. Locate the two cross brace bars, one round head screw, one nut and two washers.



11. Line up the holes in the center of both cross braces with the indentations facing each other.



12. Place the round head screw through the cove washer with the curved side facing away from the head of the bolt. Insert the bolt and washer through the center holes of the cross braces.



13. Turn the whole cross brace assembly over holding onto the round head bolt. Install the second cove washer onto the bolt with the curved side towards the cross bars.

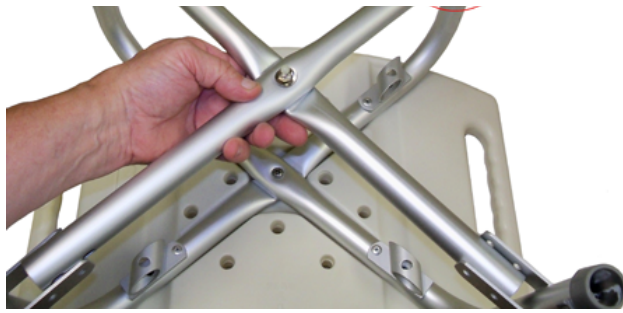


14. Tighten the nut onto the round head bolt by hand.

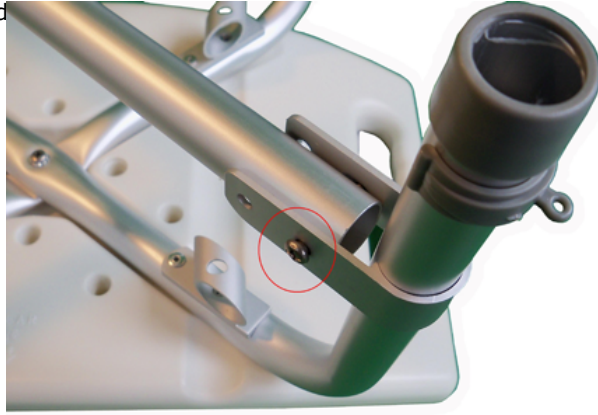


15. Align one of the members of the cross brace with the corresponding "U" on the seat frame.

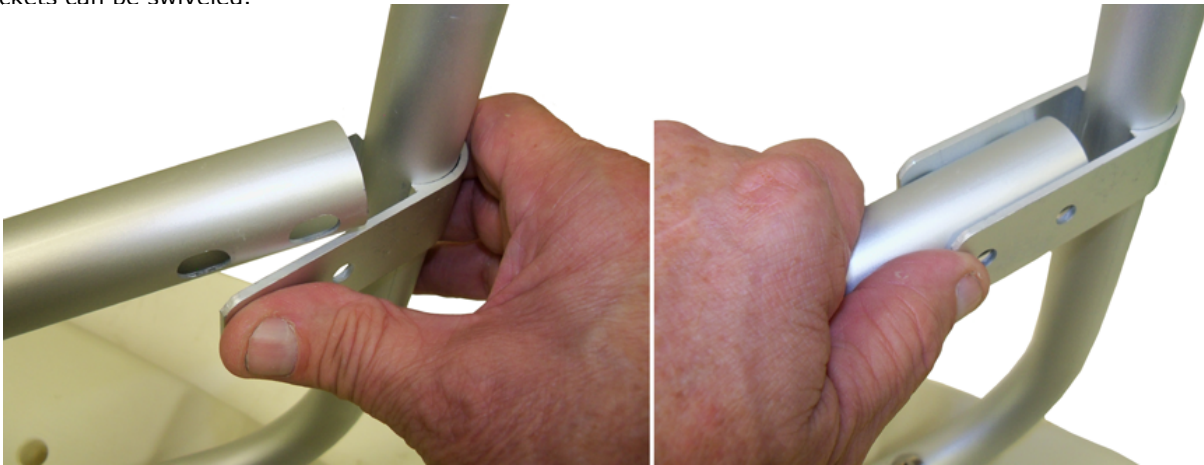




16. Insert one of the round head



17. Align the other ends of the cross brace with the "U" brackets on the seat frame. If the ends do not line up, the "U" brackets can be swiveled.



18. Install the remaining 7 bolts through the "U" brackets. Attach the safety can nuts to the bolts.



19. Tighten these eight bolts and nuts holding the cross brace to the seat frame U brackets.



20. Tighten the center bolt and put on the cross brace



21. Remove the Euro style clips from the seat frame



22. Insert one of the four legs into the seat frame

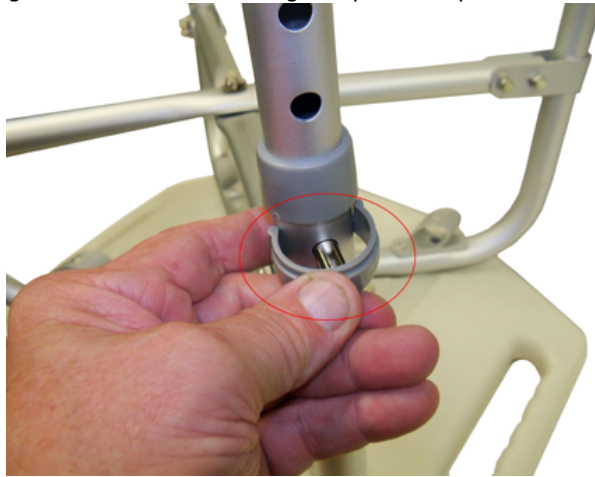




23. Set the leg to the desired height. Verify that one of the holes in the leg is aligned with the hole in the seat frame.



24. Install a Euro style clip through the seat frame and leg. Repeat this procedure for the remaining three legs.



25. Repeat this procedure for the



26. Align the top half of one of the backrest brackets into the groove on the backrest. Insert one round head screw and cove washer into one of the holes. Repeat for the other hole.



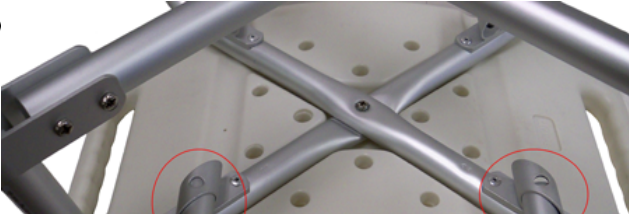
27. Tighten both screws.



28. Repeat for the other backrest



29. Align the backrest brackets v





30. Slide the backrest through all the holes in the backrest receiver brackets.



31. Align the hole in the rear backrest receiver bracket with the hole in the backrest brackets.



32. I

