

RIVERSIDE

Furniture Collection



A Long Term Care facility is home to your residents. Providing them with a bedroom furnished in a way that evokes the feelings of home will create a warm, inviting environment. The premium **Riverside Furniture Collection** features solid hardwood face frames that reflect the sophistication of the mission style with numerous customization options to suit your facility and its residents.



STANDARD FEATURES

- Tops feature buried hardwood edges and high-pressure laminate for maximum durability
- Hardwood face frame for enhanced appeal
- Sides, Drawers and Doors are Thermofused melamine
- Drawer slides are epoxy coated and have a 100 lb. rating
- Four-sided, white vinyl wrapped drawer boxes make it easier for resident to identify personal property
- Ventilated backs facilitate air circulation to help prevent bacteria growth and reduce odor
- Choice of nine most popular woodgrain laminate finishes complement most any décor

UPGRADED FEATURES

- Full extension drawer slide
- Drawer lock

To Learn More/Request a Demo: Call our LTC Customer Service Hotline at 1-877-374-8763, Contact your Sales Representative, or Visit DriveMedical.com TODAY!

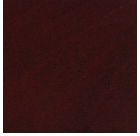


RIVERSIDE

Furniture Collection



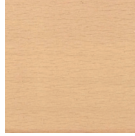
FINISH OPTIONS



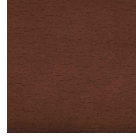
Figured Mahogany



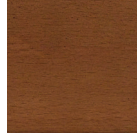
Hemlock



Kensington Maple



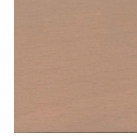
Montana Walnut



Pinnacle Walnut



Solar Oak



Veranda Teak



Wild Cherry



Windsor Mahogany

SPECIFICATIONS

Item #	Description	Dimensions	Weight
BEDSIDES			
RS-BDSC-11	1 Door 1 Drawer	21.25" w x 17.00" d x 30.00" h	75
RS-BDSC-03	3 Drawer	21.25" w x 17.00" d x 30.00" h	90
CHESTS			
RS-CHST-03	3 Drawer	31.25" w x 17.00" d x 30.00" h	100
RS-CHST-03W	3 Drawer - Wide	37.25" w x 17.00" d x 30.00" h	125
RS-CHST-04	4 Drawer	31.25" w x 17.00" d x 34.00" h	125
RS-CHST-06	6 Drawer	41.25" w x 17.00" d x 30.00" h	190
BEDSIDE HUTCH			
RS-HUTC-1	Bedside Hutch	21.25" w x 11.625" d x 20.75" h	40
WARDROBES			
RS-WDRB-24-10	1 Door	25.25" w x 23.00" d x 74.00" h	225
RS-WDRB-24-12	1 Door 2 Drawer	25.25" w x 23.00" d x 74.00" h	245
RS-WDRB-30-20	2 Door	31.25" w x 23.00" d x 74.00" h	235
RS-WDRB-36-20	2 Door Wide	37.25" w x 23.00" d x 74.00" h	250
RS-WDRB-30-22	2 Door 2 Drawer	31.25" w x 23.00" d x 74.00" h	275
RS-WDRB-36-22	2 Door 2 Drawer - Wide	37.25" w x 23.00" d x 74.00" h	285

HARDWARE AND KNOB PULLS



Satin Nickel (standard)



Antique Brass (standard)



Brushed Rope Pewter (standard)



Polished Brass (standard)



Burnished Brass (standard)



Brushed Nickel (standard)



Satin Nickel (upgrade)



Satin Nickel (standard)



Brushed Nickel (standard)



Satin Nickel (upgrade)



Regency Brass (standard)



Regency Brass (standard)

To Learn More/Request a Demo: Call our LTC Customer Service Hotline at 1-877-374-8763, Contact your Sales Representative, or Visit DriveMedical.com TODAY!

