



2025

Beds Catalog

Enhancing quality
of life is our
driving force

Comfort and Safety at Home

At Drive DeVilbiss Healthcare, we understand the importance of convalescing at home—but we also know that a truly effective homecare bed must meet many different requirements and needs. That's why our innovative homecare beds are thoughtfully designed with an array of functions to support individuals throughout many stages of life. Whether you're looking for a manual bed, an electric bed, or something in between, our beds feature enhanced adjustability and can be configured in various ways to provide dependable comfort and support for your loved ones. Explore our trusted homecare beds below.



Competitor II Manual Height Adjustable Bed



Item #	Product Description
15561	Manual Bed
15561FR	With Full-Length Side Rails (#155161FRAIL)
15561HR	With Half Rails (#155161HRAIL)
15561FR-PKG	With Full-Length Side Rails (#155161FRAIL) and 80" Innerspring Mattress (#15006)
15561FR-PKG-FM	With Full-Length Side Rails (#155161FRAIL) and 80" Fiber Core Mattress (#15007)
15561HR-PKG	With Half Rails (#155161HRAIL) and 80" Innerspring Mattress (#15006)
15561HR-PKG-FM	With Half Rails (#155161HRAIL) and 80" Fiber Core Mattress (#15007)

- Large glow in the dark hand pendant has easy-to-use controls for adjusting head and foot deck sections to comfortable positions built in battery backup and power indicator light. NEW Lock out feature can be used to prevent accidental actuation of head or foot adjustment
- In the event of a power failure, a 9 volt battery (not included) located in the hand pendant can lower the head and foot sections to a horizontal position. Two additional Batteries can be installed into the motor housing to increase adjustment speed and extend battery life. No crank needed
- Slat Deck provides strength, no-sag mattress support, no links to connect, easy to clean
- Patient weight capacity is 350 lbs. Total weight capacity 450 lbs. evenly distributed. Includes occupant, mattress, side rails, trapeze, accessories, personal affects, etc.
- Ultra light head and foot frame weigh only 41 lbs. each making one person transport and assembly easy
- #15561 Competitor II Manual Hgt Adj. Bed frame only, casters optional
- Full and Half Rails meet IEC Entrapment guidelines when used on the #15561/15571 beds and are backward compatible for use with the #15560 & 15570 Competitor beds
- Product Safety Standards: Meets IEC 60601-2-52 60601-1 60601-1-2 60601-1-11



Shop Now

Competitor II Semi Electric Height Adjustable Bed



Item #	Product Description
15571	Semi-Electric Bed
15571FR	With Full-Length Side Rails (#155161FRAIL)
15571FR-PKG	With Full-Length Side Rails (#155161FRAIL) and 80" Innerspring Mattress (#15006)
15571FR-PKG-FM	With Full-Length Side Rails (#155161FRAIL) and 80" Fiber Core Mattress (#15007)
15571FR-PKG-TM	With Full-Length Side Rails (#155161FRAIL) and 80" Therapeutic Support Mattress (#15019)
15571HR	With Half Rails (#155161HRAIL)
15571HR-PKG	With Half Rails (#155161HRAIL) and 80" Innerspring Mattress (#15006)
15571HR-PKG-FM	With Half Rails (#155161HRAIL) and 80" Fiber Core Mattress (item #15007)
15571HR-PKG-TM	With Half Rails (#155161HRAIL) and 80" Therapeutic Support Mattress (item #15019)

- Hand Crank adjustable bed height features a NEW positive fit hexagonal crank connection making it easy to raise and lower bed height for patient comfort, ease of entry/egress and patient care accessibility
- Large glow in the dark hand pendant has easy-to-use controls for adjusting head and foot deck sections to comfortable positions built in battery backup and power indicator light. NEW Lock out feature can be used to prevent accidental actuation of head or foot adjustment
- In the event of a power failure, a 9 volt battery (not included) located in the hand pendant can lower the head and foot sections to a horizontal position. Two additional Batteries can be installed into the motor housing to increase adjustment speed and extend battery life. No crank needed
- Slat Deck provides strength, no-sag mattress support, no links to connect, easy to clean
- Patient weight capacity is 350 lbs. Total weight capacity 450 lbs. evenly distributed. Includes occupant, mattress, side rails, trapeze, accessories, personal affects, etc.
- Ultra light head and foot frame weigh only 41 lbs. each making one person transport and assembly easy
- Competitor II Crank Hi/Lo Hgt Adj. Bed frame only with casters
- Full and Half Rails meet IEC Entrapment guidelines when used on the #15561/15571 beds and are backward compatible for use with the #15560 & 15570 Competitor beds
- Product Safety Standards: Meets IEC 60601-2-52 60601-1 60601-1-2 60601-1-11



[Shop Now](#)

Multi-Height Manual Bed



Item

15003P

Product Description

Manual Bed

15003P-FR

With Full-Length Side Rails (#15201ABV)

15003P-HRPKG-TS

With Half Rails (#15201BV) and 80" Therapeutic Support Mattress (#15019)

- Convenient fold down hand cranks at the foot end for Foot, Head and overall bed height adjustment
- Easy to set up, bed ships in two cartons, shaft stores under frame when unassembled
- Head/foot adjustment provide anatomically correct sleep surface
- Reinforced channel frame construction offers superior strength, resists twisting and reduced weight
- Long lasting Zinc-coated spring deck for Pt comfort
- Heavy Duty bed ends with durable HD Polyethylene Molded Bed End covers are attractive, easy-to-maintain
- Satisfies applicable FDA entrapment guidelines
- Patient weight Capacity 350 lbs. (158kg). Total Weight Capacity 450 lbs. (204kg)
- Half rails and full rails available in packages (PKG) or sold separately



[Shop Now](#)



Semi-Electric Bed (Single Crank)

Item #	Product Description
15004P	Semi-Electric Bed
15004P-FR	With Full-Length Side Rails (#15001ABV)
15004P-HR	With Half Rails (#15201BV)
15004P-HRPKG-TS	With Half Rails (#15201BV) and 80" Innerspring Mattress (#15006)

- Quiet, smooth operation, Head/Foot section adjusts electronically, Height adjusts manually
- Easy-to-transport and set up, Bed ships in two cartons
- Shaft stores under frame when unassembled
- Channel frame construction provides superior strength and reduced weight
- Reinforced frame resists twisting and bending.
- Long Lasting Zinc-coated spring deck for Pt comfort
- Heavy Duty bed ends with durable HD Polyethylene Molded Bed End covers are attractive, easy-to-maintain
- Clip-on pendant mounts on bed rail, operate Head and Foot section simultaneously
- Half rails and full rails available in packages (PKG) or sold separately
- Satisfies applicable FDA entrapment guidelines
- Extension kit available (model #15005EXTKIT-L) extends length from 80" to 84"
- Patient weight Capacity 350 lbs. (158kg). Total Weight Capacity 450 lbs. (204kg)
- Motor is UL Approved, Bed is manufactured in ISO9001 & ISO13485 facility



Shop Now

Delta® Ultra- Light 1000, Semi-Electric Bed



Item #	Product Description
15030	Ultra-Light Semi-Electric Bed
15030BV-FR	With Full-Length Side Rails (#15001ABV)
15030BV-HR	With Half Rails (#15201BV)
15030BV-PKG	With Full-Length Side Rails (#15001ABV) and 80" Innerspring Mattress (#15006)
15030BV-PKG-T	With Full-Length Side Rails (#15001ABV) and 80" Therapeutic Support Mattress (#15019)
15030BV-PKG-1-T	With Full-Length Side Rails (#15001ABV) and 80" Fiber Core Mattress (#15007)
15030BV-PKG-11	With Full-Length Side Rails (#15001ABV) and 80" Quick-N-Easy Mattress (#15076)
15030BV-PKG-2	With Half Rails (#15201BV) and 80" Innerspring Mattress (#15006)
15030BV-PKG-1	With Half Rails (#15201BV) and 80" Therapeutic Support Mattress (#15019)
15030BV-PKG-4	With Half Rails (#15201BV) and 80" Fiber Core Mattress (item #15007)
15030BV-PKG-12	With Half Rails (#15201BV) and 80" Quick-N-Easy Mattress (#15076)

- The transition box mounted on the foot section is key to interchangeability
- The transition box allows you to change the rotation of the high/low shaft
- Headboard is taller than footboard to better fit home decor
- The wood grain panels are break and scratch resistant
- Foot section weighs 50% less than conventional foot sections to make deliveries safe and easy
- Once installed, the high/low shaft will stay with the bed to eliminate loss or forgetting on future installations
- Labels and color-coded springs assure accurate installation of side rails for patient safety
- Unique motor is completely self-contained to reduce weight and noise
- The motor assembly can be installed and removed with patient in bed
- Bed, side rails and mattress safety-tested by SGS, a nationally recognized testing facility
- Satisfies all applicable FDA entrapment guidelines
- The motor is UL approved
- In the event of a power failure, a 9 volt battery can lower the head and foot sections nine times
- No crank needed
- New and improved hand pendant has large, easy-to-use controls
- Channel frame construction provides superior strength and reduced weight
- Zinc-coated spring deck
- Extension kit available (model #15030EXTKIT) extends length from 80" to 84"
- Patent Pending



[Shop Now](#)

Delta® Ultra-Light 1000, Full-Electric Bed



Item #	Product Description
15033	Ultra-Light Full-Electric Bed
15033BV-FR	With Full-Length Side Rails (#15001ABV)
15033BV-HR	With Half Rails (#15201BV)
15033BV-PKG	With Full-Length Side Rails (#15001ABV) and 80" Innerspring Mattress (#15006)
15033BV-PKG-T	With Full-Length Side Rails (#15001ABV) 80" Therapeutic Support Mattress (#15019)
15033BV-PKG-11	With Full-Length Side Rails (#15001ABV) and 80" Quick-N-Easy Mattress (#15076)
15033BV-PKG-2	With Full-Length Side Rails (#15001ABV) and 80" Fiber Core Mattress (item #15007)
15033BV-PKG-1	With Half Rails (#15201BV) and 80" Innerspring Mattress (#15006)
15033BV-PKG-1-T	With Half Rails (#15201BV) and 80" Therapeutic Support Mattress (#15019)
15033BV-PKG-12	With Half Rails (#15201BV) and 80" Quick-N-Easy Mattress (#15076)
15033BV-PKG-4	With Half Rails (#15201BV) and 80" Fiber Core Mattress (item #15007)

- The transition box mounted on the foot section is key to interchangeability
- The transition box allows you to change the rotation of the high/low shaft
- Headboard is taller than footboard to better fit home decor
- The wood grain panels are break and scratch resistant
- Foot section weighs 50% less than conventional foot sections to make deliveries safe and easy
- Once installed, the high/low shaft will stay with the bed to eliminate loss or forgetting on future installations
- Labels and color-coded springs assure accurate installation of side rails for patient safety
- Unique motor is completely self-contained to reduce weight and noise
- The motor assembly can be installed and removed with patient in bed
- Bed, side rails and mattress safety-tested by SGS, a nationally recognized testing facility Satisfies all applicable FDA entrapment guidelines
- The motor is UL approved
- In the event of a power failure, a 9 volt battery, located in the hand control, can lower the head and foot sections nine times No crank needed
- New and improved hand pendant has large, easy-to-use controls
- Bed ships in two cartons
- Channel frame construction provides superior strength and reduced weight
- Zinc-coated spring deck
- Extension kit available (model #15030EXTKIT) extends length from 80" to 84"
- Patent Pending



[Shop Now](#)

Delta® Ultra-Light 1000 Full-Electric Low Bed



Item #	Product Description
15235	Ultra-Light Full-Electric Low Bed
15235BV-FR	With Full-Length Side Rails (#15001ABV)
15235BV-HR	With Half Rails (#15201BV)
15235BV-PKG	With Full-Length Side Rails (#15001ABV) and 80" Innerspring Mattress (#15006)
15235BV-PKG-T	With Full-Length Side Rails (#15001ABV) and 80" Therapeutic Support Mattress (#15019)
15235BV-PKG-I	With Half Rails (#15201BV) and 80" Innerspring Mattress (#15006)
15235BV-PKG-I-T	With Half Rails (#15201BV) and 80" Therapeutic Support Mattress (#15019)

- The transition box mounted on the foot section is key to interchangeability
- The transition box allows you to change the rotation of the high/low shaft
- Headboard is taller than footboard to better fit home decor
- The wood grain panels are break and scratch resistant
- Once installed, the high/low shaft will stay with the bed to eliminate loss or forgetting on future installations
- Labels and color-coded springs assure accurate installation of side rails for patient safety Unique motor is completely self-contained to reduce weight and noise
- 9 ½" to 23 ½" deck height
- Top mounted Hi/Lo crank accessibility
- Height-adjustable motor comes pre-installed on the foot section
- Caster easily moves from standard to low bed position
- The motor assembly can be installed and removed with patient in bed
- Bed, side rails and mattress safety-tested by SGS, a nationally recognized testing facility Satisfies all applicable FDA entrapment guidelines
- The motor is UL approved
- In the event of a power failure, a 9 volt battery can lower the head and foot sections nine times
- New and improved hand pendant has large, easy-to-use controls
- Hand crank located on the top of the footboard prevents bending for the caregiver when in the low position
- Channel frame construction provides superior strength and reduced weight
- Zinc-coated spring deck
- Extension kit available (model #15030EXTKIT) extends length from 80" to 84"
- Patent Pending



Shop Now

Delta® Pro Homecare Bed System



Item #	Product Description
15003PN	Manual Bed - Standard Height
15004PN	Linear Semi Electric - Standard Height
15005LPN	Linear Full Electric- Low Height
15030N	Semi Electric - Standard Height
15033NC	Full Electric - Standard Height
15235N	Full Electric - Low Height

- This unique bed is designed to fit your needs offering a universal frame capable of configuring up to 6 different bed designs. Looking for a semi-electric bed? Full electric? Low bed? You can have them all with 1 universal frame system - the Delta Pro Bed by Drive.
- Patent pending Universal Frame can configure with various component to create up to SIX unique bed configurations offering more homecare bed options without the need to store more beds!
- Assists with inventory constraints by offering 1 homecare bed system that can transform to suit multiple needs using color coded component options
- Product Safety & Performance Standards: Meets IEC 60601-2-52; 60601-1; 60601-1-2; 60601-1-11
- Choose between semi-electric and full electric motor options to provide head, foot, and height adjustability of bed frame as needed (excludes 15003PN, manual crank homecare bed system)
- Ultra lightweight head and foot frames easy to set up with no links to connect and no tools required
- Square tube steel frame slat deck provides durable strength, no-sag mattress support, and is easy to clean
- HD Polyethylene molded bed ends are attractive, labeled for proper assembly, and easy to clean and maintain
- Bed End safety lock slides over hanger pins to prevent disengaging from bed ends
- UL approved motor is self contained for reduced weight and noise and can be easily installed and removed with patient in bed (excludes 15003PN)
- Reduce service calls with large glow in the dark hand pendant that is easy-to-use for adjusting head and foot deck sections; built in battery backup and LED indicators for power and lockout included (excludes 15003PN)
- Power failure protection available on dual style motors via a 9-volt battery (not included) located in the hand pendant which can return the frame to a horizontal position. Manual cranks included for all styles (excludes 15003PN, no electrical components means independent of electrical power availability)
- Frame includes mounted retractable full rail receiver brackets to eliminate cross braces ensuring proper placement and reducing equipment loss
- Half (15561HRAIL) and full (15561FRAIL) rails are available, sold seperately, and meet FDA entrapment guidelines as well as ASTM standards



Shop Now

Drive Full Electric Low Height Bed



Item #	Product Description
15005LP	Full-Electric Bed
15005LP-FR	With Full-Length Side Rails (#15001ABV)
15005LP-HR	With Half Rails (#15201BV)
15005LP-FRPKG	With Full-Length Side Rails (#15001ABV) and 80" Innerspring Mattress (#15006)
15005LP-FRPKG-TS	With Full-Length Side Rails (#15001ABV) and 80" Therapeutic Support Mattress (#15019)
15005LP-HRPKG	With Half Rails (#15201BV) and 80" Innerspring Mattress (#15006)
15005LP-HRPKG-TS	With Half Rails (#15201BV) and 80" Therapeutic Support Mattress (#15019)

- Roll at any Height: 14.81" (376mm) to 22.83" (580 mm) deck height
- Roll at Low Height: 11.81 (300 mm) to 19.83" (504mm) deck height
- Height-adjustment and Head/Foot deck motors come pre-installed on the foot section
- In the event of power failure, top mounted Hi/Lo crank accessibility and manual crank motor override of sleep surface adjustments
- Easy-to-transport and set up, Bed ships in two cartons
- Channel frame construction provides superior strength and reduced weight
- Reinforced frame resists twisting and bending
- Long lasting Zinc-coated spring deck for Patient comfort
- Heavy-duty bed ends with durable HD Polyethylene Molded Bed End covers are easy-to-maintain
- Headboard is taller than footboard to blend with home decor
- Labels and color-coded springs help ensure accurate installation of side rails for patient safety
- High performance workhorse muscle of the 3-motor power plant is an industry standard
- Motor is UL Approved, Bed is manufactured in ISO9001 &
- Satisfies applicable FDA entrapment guidelines
- Extension kit available (model #15005EXTKIT-L) extends length from 80" to 84"
- Auto-Contour raises the head and foot of bed simultaneously to help prevent lower back and sacral shearing induced pressure injuries, eliminating an extra step for caregivers and residents without the need to remember FOB elevations before HOB
- Auto-contour may help prevent sacral shearing wounds by simultaneously elevating the head and foot bed sections so there's no sliding during position changes
- Only homecare beds boasting auto-contour which allows patients to stay comfortably in place while being better positioned for reading, watching television, or talking to staff and visitors



Shop Now

Solite Pro Homecare Bed Package



Item

15006LP

- The Solite Pro from Drive DeVilbiss Healthcare is a fully electrical profiled homecare bed that offers smooth, quiet operation and versatile positioning for maximum patient comfort. The Solite Pro can nest within itself and comes standard with a built-in transport stand for storage and easy transport. Additional features include a tool-free built-in leg extension extending from 80" to 84", knee break function, and improved actuators in the variable height mechanism that add to the strength of the bed, all while retaining an attractive, domestic look and feel.
- Redesigned platform for improved patient comfort when profiling
- Individual sections strengthened for extended performance and reliability
- Improved integral leg extension with safety features to prevent entrapment
- Improved auto-regressing backrest prevents pinching in the sacral area
- All individual sections of the bed weigh less than 55 lbs. (25 kg) for easier assembly
- Four braked castors for maneuverability and safety
- Easy-use handset controls all functions and includes lockout function
- Transport stand included
- Optional integral full-length side rails for safety and ease of use (item #: 15006LEXRAIL)
- Additional optional accessories sold separately include grab handles in two height options, standard (item #: 15006LPSTDRAIL) and short (item #: 15006LSHRTRAIL)
- Rail accessories meet FDA and ASTM entrapment guidelines and standards



[Shop Now](#)

Lightweight Bariatric Homecare Bed



Item #	Product Description
15300LW	42" W x 80" L
15300LW-HR	42" W x 80" L with Half Rails (15021BV-LW)
15302LW	48" W x 80" L
15300LW-HR	48" W x 80" L with Half Rails (15021BV-LW)
15303LW	53" W x 80" L
15303LW-HR	53" W x 80" L with Half Rails (15021BV-LW)

- Drive is leading the way in Homecare beds by introducing the next generation of Bariatric support. Introducing Drive DeVilbiss' new Lightweight Bariatric Beds. With frames upto 100 lbs lighter than most current Bariatric offerings, these beds are easy to maneuver, transport and assemble. Without compromising strength, these durable lightweight frames have been tested and verified to maintain the same safe working **load capacity of up to 1000 lbs! (Weight capacity varies by size)**. Available in 42", 48" and 54" widths gives patients the space they need to recover and providers the ability to deliver and assemble with ease
- Lightweight frame design offers providers easier and more manageable bed deliveries and assemblies
- Allows for additional space for patient comfort and recovery as well as caregiver efficiency
- Product Safety & Performance Standards: Meets IEC 60601-2-52; 60601-1; 60601-1-2; 60601-1-11
- Full electric bariatric homecare bed with dual motor assembly for head and frame adjustability
- Ultra lightweight frame is easily set up by 1 individual; no links to connect and no tools required
- Square tube steel frame slat deck provides durable strength, no-sag mattress support, and is easy to clean
- Scratch resistant wood grain panel bed ends include hi lo motors for frame height adjustability
- UL approved motor is self contained for reduced weight and noise and can be easily installed and removed with patient in bed
- Reduce service calls with large glow in the dark hand pendant that is easy-to-use for adjustments; LED indicators available for power and lockout included
- Battery Back up accessory available (#15302LWB) and sold seperately
- Rail accessories meet FDA and ASTM entrapment guidelines and standards



[Shop Now](#)

Beds

Standard Telescoping Full-Length Side Rail, Brown-Vein Finish

Item

15001ABV

- Attractive brown-vein finish
- Constructed of 1" steel
- Telescopes with movement of bed
- Easily adjusts up or down with spring-loaded release
- Spring-loaded crossbars are easy-to-install and remove

[Shop Now](#)



Half-Length Bed Rail Bariatric Lightweight Beds

Item

15021BV-LW

- Durable steel construction in rich brown finish offers attractive and easy-to-maintain homecare style
- Easy to install half Rail designed specifically for Lightweight Bariatric Homecare Bed series
- Product Safety & Performance Standards: Incompliance with FDA Hospital Bed System Dimensional Assessment Guidance to Reduce Entrapment as well as CPSC ASTM standards
- Ideal for maximum protection and support when bed is elevated

[Shop Now](#)



Full-Length Bed Rail, For Use with Competitor II and Delta Pro

Item

15561FRAIL

- For use with Competitor II and Delta Pro Homecare Bed Systems
- Ideal for protection when bed is elevated
- Chrome finish on second and fifth bar allows for scratch-proof movement of adjustment bracket
- Attractive brown-vein finish is easy to maintain and less institutional looking
- Half rail was designed to comply as part of the FDA Hospital Bed System Dimensional and Assessment Guidance to Reduce Entrapment
- Constructed of 1" steel

[Shop Now](#)

Half-Length Bed Rail, For Use with Competitor II and Delta Pro

Item

15561HRAIL

- For use with Competitor II and Delta Pro Homecare Bed Systems
- Ideal for protection when bed is elevated
- Chrome finish on second and fifth bar allows for scratch-proof movement of adjustment bracket
- Attractive brown-vein finish is easy to maintain and less institutional looking
- Half rail was designed to comply as part of the FDA Hospital Bed System Dimensional and Assessment Guidance to Reduce Entrapment
- Constructed of 1" steel

[Shop Now](#)

Half-Length Bed Rails

Item

15201BV

- Unique design prevents individuals from being lodged between bars
- Ideal for maximum protection when bed is elevated
- Fits most hospital beds with steel frame
- Attractive brown-vein finish is easy-to-maintain and less institutional looking
- Constructed of 1" steel
- Not for use with "Pan-Style" bed surface
- Easy-to-install

[Shop Now](#)

Innerspring Mattress

Item

Product Description

15006 36" W x 80" L - Standard

15006EF 36" W x 80" L - Extra Firm

15014 36" W x 84" L x 6" H

- High quality innerspring design
- The unit has a 1" high-density, firm, combustion-modified fiber topper on each side
- Multi-layered with two 1" high-density, firm, combustion modified fiber toppers on the top and one 1" high density, firm, combustion-modified fiber topper on the bottom (15006EF only)
- Vinyl cover is waterproof and anti-static for easy use and care

[Shop Now](#)

Cellulose Fiber Mattress

Item #	Product Description
15007	36" W x 80" L x 6" H

- 12 oz thermal-bonded polyester fiber
- Two-sided
- Inverted seam with zipper cover
- Fluid proof
- Non-allergenic
- Easy cleaning with mild soap and water

[Shop Now](#)

Ortho-Coil™ Super Firm Support Innerspring Mattress

Item #	Product Description
3637-2OC	36" W x 80" L x 6" H

- Super-firm innerspring mattress provides ultimate support and comfort
- The two polyester fiber pads on the top and bottom of the mattress are perfect for heavier patients
- The Masongard vinyl cover is waterproof

[Shop Now](#)

Bariatric Foam Mattresses

Item #	Product Description
15301	42" W x 80" L x 6.5" H
15301-84	42" W x 84" L x 6.5" H
15310	48" W x 80" L x 6.5" H
15310-84	48" W x 84" L x 6.5" H
15312	54" W x 80" L x 6.5" H

- Nylon top cover is fluid-resistant and easy to clean for extended life and service
- Vinyl bottom is waterproof
- Fire Retardant: Mattress meets the requirements of 16 CFR Part 1632 –Standard for the Flammability of Mattresses and Mattress Pads and 16 CFR Part 1633 (Federal Flammability (open flame) standard for mattress sets) when used without a foundation
- High-Density foam mattress for the bariatric patient
- Solid foam inner core provides comfort, support and durability in a one-piece construction
- Latex free

Shop Now



Mattress Covers

Item #	Product Description
15010	36" W x 80" L - Contoured
15011	36" W x 80" L - Zippered
15034	42" W x 80" L - Bariatric, Zippered

- Designed to keep mattress clean, and protected from dust, incontinency, odors and stains
- Made of water-proof, non-allergenic vinyl
- Available in zippered and contoured designs

Shop Now



Clear Plastic Mattress Transport Bag

Item #

3870N

- 2.1.6 MIL Clear Plastic Mattress Cover Storage Bag
36.5" x 90" x 7" in rolls of 100

[Shop Now](#)

Bed Extension Kit

Item #

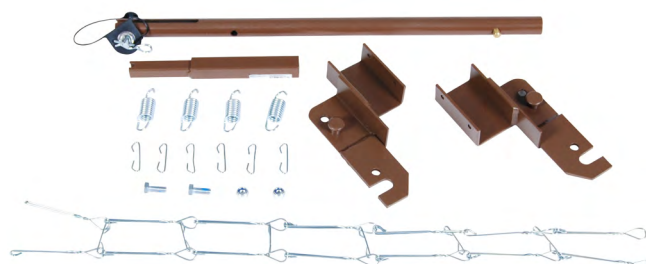
15030EXTKIT
15005EXTKIT-L

For Use With

15030 | 15033 | 15230 | 15235 Beds

15004P | 15005LP Beds

- Adds 4" to length of bed
- Easy-to-install

[Shop Now](#)

Compet II 4" Extension

Item #
15561EXT

- An extension kit that attaches to the bed deck and extends the Competitor bed 4" longer for patients

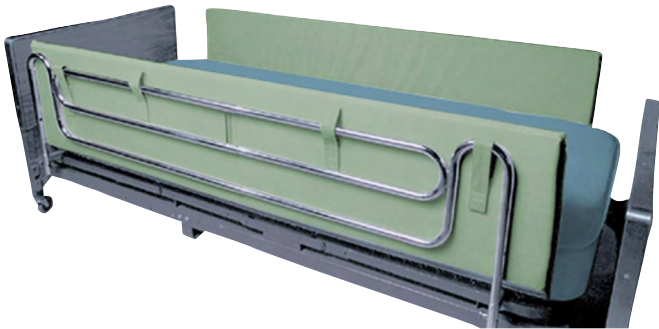


[Shop Now](#)

Foam Side Rail Bumper Pads

Item #	Product Description
M3800-36	14" W x 36" L x 1.5" H
M3800-48	14" W x 48" L x 1.5" H
M3800-72	14" W x 72" L x 1.5" H

- Side-rail bumper pads are made with high-density foam to create a safe environment for patients
- Each pair comes complete with a fluid-resistant
- Vinyl cover with hook and loop fastener straps to secure to side rail



[Shop Now](#)

Beds

Mattress Extender with Vinyl Cover

Item #	Product Description
3835-4	35"W x 4"L x 6"H

- Mattress gap extender fill gaps between mattress and footboard/headboard
- Foam gap filler can cover 4" inch gap
- Durable Vinyl covering is easy to wipe clean as needed

[Shop Now](#)



Bed Transporter

Item #	For Use With
15060	15003 15004 15005 15230 15235 15030 15033

- Helps caregivers easily move their patients' beds throughout their facilities. This is used for the 15003, 15004, 15005, 15230, 15235, 15030, and 15033 beds



[Shop Now](#)

Bedding in a Box

Item

15030HBC

- The Bedding in a Box set is perfect for use with most standard manual, semi-electric and full electric beds
- Set contains 1 pillow case, 1 fitted sheet, 1 cover sheet and 1 blanket that are ideal for standard and hospital homecare beds Fitted sheet measures 36" x 80" x 5" - 6"
- Sheets are made of a high quality cotton and polyester blend Blanket is 100% cotton
- All components are machine washable

[Shop Now](#)

Hospital Bed Linen Kit

Item

15030HBL

- The Fitted Sheet is perfect for use with most standard manual, semi-electric and full electric beds
- Contains 2 fitted sheets that are ideal for standard hospital and homecare beds Fitted sheet measures 36" x 80" x 5" - 6"
- Sheets are made of a high quality cotton and polyester blend
- All components are machine washabl

[Shop Now](#)

Fitted Sheets Extended

Item

15030HBL-3684

- Perfect for use with manual, semi-electric and full electric beds
- Contains 2 fitted sheets that are ideal for extended-length or extended-width hospital and homecare beds with 8" thick mattresses
- Sheets are made of a high quality cotton and polyester blend
- All components are machine washable
- No ironing required

[Shop Now](#)





CORPORATE OFFICE 🏠 99 Seaview Blvd., Port Washington, NY 11050 📞 877-374-8763 🌐 www.drivemedical.com
CANADA OFFICE 🏠 256 Aviva Park Drive, Vaughan, Ontario Canada L4L 9C7 📞 866-752-1363

©2025 Medical Depot, Inc. dba Drive DeVilbiss Healthcare, 99 Seaview Boulevard, Port Washington, NY 11050. All trademarks used in association with the sale of products of Drive DeVilbiss are trademarks owned by Medical Depot, Inc. All other trademarks, trade names, service marks and logos referenced herein belong to their respective companies. Refer to product instruction guide for warranty details.